



About DIGI

DIGI International is a wireless solution provider. We help automate and remotely manage critical care medical systems for hospitals and patient homes. Our array of machine connectivity solutions are relentlessly reliable, secure, scalable, managed, and always come through when you need it most.

Why Trust DIGI

- Enterprise Level Wireless Applications
- **Fast Roaming** Between Multiple Access Points for Critical Devices
- Software Expertise in **Linux Development**
- Highly Secure & Private Information Transfer
- Extensive R&D Resource with **Zero Long-term Debt**
- Product Longevity with Assured Availability
- **8-10 Year Lifecycles** with 5 Year Warranties
- Assistance with **FDA/EMA Regulatory Approval** Process
- Software for Medical Development and Design
- Adherence to Customer Validation & Verification Processes
- **Stringent Process Control** for Custom Part Numbers
- RF Communication Platforms with 2.4 GHz and 5 GHz Options
- Global Certifications for OEMs
- **Optimized U-Boot** for Faster Boot



ADDING
WIRELESS CAPABILITIES
TO
MEDICAL DEVICES

Medical Applications Using DIGI



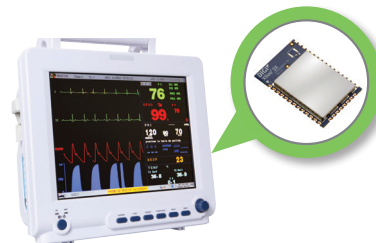
Infusion Pump

Digi ConnectCore® 6UL System on Module

Extended battery life and fast roaming between access points for critical devices

Key Features

- Optimized Deep Sleep Mode
- Uninterrupted Wireless Communication
- Dual-band WiFi 802.11 a/b/g/n/ac and BT 4.2
- Based on ARM Cortex-A7
- Surface Mount



Patient Monitoring Application

Digi XBee® SX

Bring precision, ease of use, safety, and versatility to your practice

Key Features

- 256-bit AES Encryption
- Reliable Low Cost Connectivity
- 400 MHz Long Range Communication
- Simple Point to Multi-point Mode



Lymphedema Pumps

Digi XBee® Zigbee Pro S2C + Digi XBee® Gateway

Wireless communications for ease-of-use and maximum comfort

Key Features

- Firmware Update via UART, SPI, or OTA
- Through-Hole and Surface Mount Form Factor
- Highly Versatile Operating Temperature
- Industry Leading Sleep Current
- Remote Management via Device Cloud

Other Applications Using DIGI

Smart Infusion Pumps – Secure wireless connectivity

Cart on Wheels – Mobile care and medication

Patient Monitoring – Centralized mobile monitoring systems

Bedside Monitoring – Remote patient monitoring system

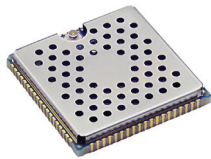
Blood Analysis – Deliver and document accurate results with EMR

Portable AED – Automated external defibrillator

Glucose Meter – Real-time blood sugar monitoring

DIGI Products for Medical

Digi ConnectCore® 6/6UL Families

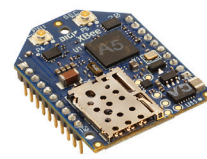


ARM Cortex-A7 @ 528 MHz | Up to 2 GB NAND flash | Pre-certified 802.11a/b/g/n/ac | Embedded device security framework

Starter Kits:

CC-WMX6UL-START | CC-WMX6UL-KIT | CC-WMX6-KIT

Digi XBee® Cellular Family

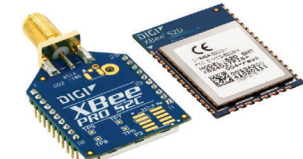


20-pin XBee TH Form Factor | FCC & Carrier End-device Certified | Secure Boot | Encrypted Storage

Starter Kit: XKC-VIT-U

Module: XBC-V1-UT-001

Digi XBee® ZigBee Family



128-bit AES Encryption | x4 10-bit ADC Inputs | Point-to-Multipoint Networking | Programmable 32 KB Flash/2 KB RAM

Starter Kits:

XKA2C-Z7T-U | XKB2-Z7T-WZM | XKB2-Z7T-WTSM

Digi XBee® Gateway Family



Freescale i.MX28 Processor | 20 MB RAM | Secure Enterprise Management via Device Cloud | Digi Embedded Linux

Starter Kits:

XKA2C-Z7T-U | X2E-Z3C-E1-A | X2E-Z3C-W1-A | X2E-Z4C-D2-A | X2E-Z4C-H1-A | X2E-Z4C-D1-A

Digi ConnectPort® TS MEI



Serial-ethernet integration | Tx/Rx LED's per port | Web proxy support | Multi-user access controls | Remote manager support

Products:

PortServer TS | PortServer TS MEI | ConnectPort LTS 8 / 16 / 32

Digi TransPort® Family



LTE-A with HSPA+ Fallback | 10/100/1000 Mbps/s | Throughput up to 866 Mbps (802.11ac) | 2.4 GHz – 5 GHz TX Power

Products:

LR 54 | WR 31 | WR 11 | WR 21 | WR 44 | WR 44R | WR 44 RR

Services offered from **concept to production**



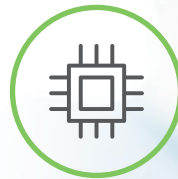
Design services



Certifications



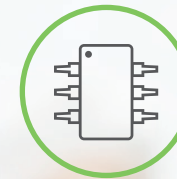
Software development



Hardware design



Design reviews



System integration

Questions you should ask every wireless solution provider – including us

1. Do you know the medical device business?
2. Do you know our basic processes and what we expect?
3. Are you aware of our long-term availability requirements?
4. Do you know what's required for us to get regulatory approvals (FDA/EMA)?
5. Do your RF platforms meet the expectations of a hospital environment?
6. What are the software capabilities of your embedded devices? How well do you support software development?
7. Do you have the infrastructure to support medical device engineering and production?
8. What's your internal process for quality control?

Compliance, Standards and Technologies

Depend on Digi to make building your wireless products as easy and as secure as possible. Digi wireless devices are RF-certified giving you faster access to the medical market while being rigorously compliant to protect your products and networks in the wild.

